

BECE 2021 QUESTIONS

NOVEMBER, 2021

HOME ECONOMICS
Essay And Objective

1 Hour 45 Minutes

2&1

Name.....

Index Number.....

PB PAGEZ EXAMINATIONS

BASIC EDUCATION CERTIFICATE EXAMINATION (BECE)

BDT (HOME ECONOMICS)

PAST QUESTION

NOVEMBER, 2021

HOME ECONOMICS 2

SECTION A
CORE SKILLS
[COMPULSORY]

1. (a) Define *a seam* in clothing construction. 2 marks

.....
.....
.....

(b) (i) Give *one* example each of the following.

α. Conspicuous seam;

.....

β. Inconspicuous seam;

2 marks

.....

(ii) List *two* moist methods of cooking food.

2 marks

.....

.....

(c) (i) List *two* types of perspective drawing.

2 marks

.....

.....

(ii) List *three* types of pictorial drawing.

3 marks

.....

.....

(iii) Name *two* stages of the design process.

2 marks

.....

.....

(d) (i) Explain the spectrum of colour.

2 marks

.....

.....

.....

.....

(ii) List the secondary colours.

3 marks

.....
.....
.....

(iii) Explain the term complementary colours.

2 marks

.....
.....
.....
.....

SECTION B

[50 MARKS]

Answer *two* questions only from this section.

All questions carry equal marks.

2. (a) Outline *three* rules for patching.

6 marks

.....
.....
.....
.....
.....

(b) Re-arrange the steps provided below to demonstrate how to thread the sewing machine. 5 marks

- (i) Pass the thread through the thread guide;
- (ii) Pass the thread through the pressure regulator;
- (iii) Fix the thread onto the spool pin;
- (iv) Pass the thread through the eye of the needle;
- (v) Pass the thread down to the needle thread tension regulator to the take-up lever.

.....
.....
.....
.....
.....

(c) List **five** parts of a garment where facing can be done. 5 marks

.....

.....

.....

.....

.....

(d) State **two** reasons for facing in garment construction. 2 marks

.....

.....

.....

.....

(e) Explain the following sewing terms.

(i) Layout

.....

.....

(ii) Seam allowance 4 marks

.....

.....

(f) List **three** articles that can be made using French seam. 3 marks

.....

.....

.....

3. (a) State **four** advantages for practicing kitchen hygiene. 4 marks

.....

.....

(b) (i) List the **three** methods of heat transfer used in cooking. 3 marks

.....

.....

.....

(ii) List the method of heat transfer that is applied during the cooking of each of the following dishes:

(α) tubani;

(β) queen cake.....

(γ) kebab.....3 marks

(c) State **two** reasons for preserving fresh fish. 4 marks

.....

.....

.....

.....

(d) State the portion per head of the following food items:

(i) fresh fish;.....

(ii) rice;.....

(iii) egg.....

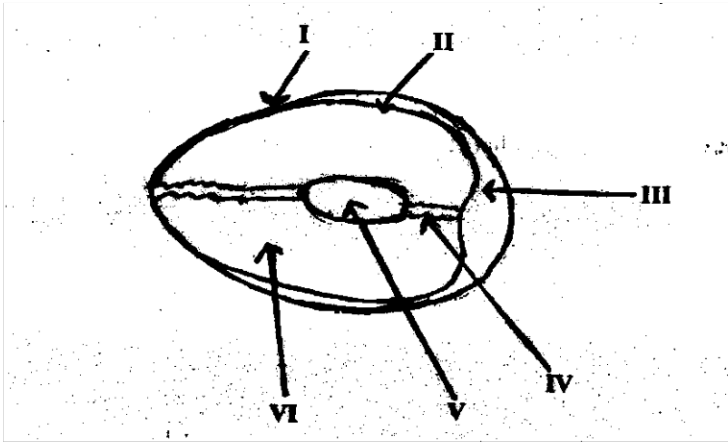
3 marks

(e) State **one** reason for cooking yam. 2 marks

.....

.....

.....



(f) The diagram above is an egg. Provide the names of the parts labelled **I, II, III, IV, V and VI**

I

II

III

IV

V

VI

6 marks

4. (a) List **two** parts of garment that can be neatened using binding.

2 marks

.....

(b) State **four** factors to be considered when buying a pair of scissors.

4 marks

.....

(c) State **three** methods of finishing the raw edges of a plain seam.

3 marks

.....

(d) Mention *two* types of pocket usually found on the uniform of a J.H.S school boy. 2 marks

.....
.....

(e) Distinguish between a dish and a meal. 4 marks

.....
.....
.....

(f) State *two* reasons why people become vegetarian. 4 marks

.....
.....
.....

(g) Explain the following menu:

(i) A la carte;

.....
.....

(ii) Table d' hôte;

.....
.....

(iii) Cyclical;

.....
.....

6 marks

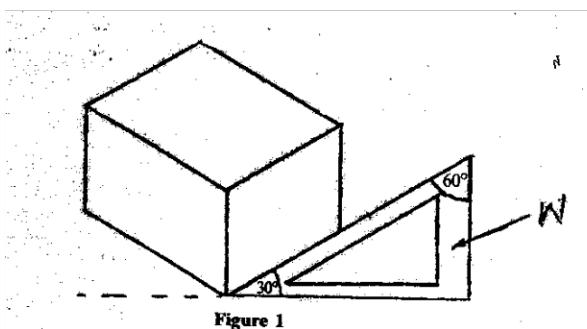
END OF ESSAY TEST

HOME ECONOMICS 1

OBJECTIVE TEST

- The following are household furniture **except**
 - Bookshelves
 - Cabinet
 - Chair
 - Television
- The shape of a developed open-ended cylinder is a
 - Circle
 - Parallelogram
 - Rectangle
 - Rhombus
- The plug is fused in order to
 - Break when there is excessive current.
 - Increase the flow of electricity
 - Oppose the flow of electricity
 - Stop the flow of electricity
- Evaluations are carried out on an artefact in order to
 - Change the situation completely.
 - Conduct a new research of the design
 - Increase the cost of artefact
 - Make modification on the design

Use figure 1 to answer questions 5 and 6.



- Figure 1 shows an object drawn in
 - Isometric
 - Oblique
 - Orthographic
 - Perspective
- The instrument labeled **W** is

- Protractor
 - Rule
 - Set square
 - Tee square
- The traditional form of food preservation in Ghana is
 - Bottling and freezing
 - Freezing and drying
 - Drying and salting
 - Salting and bottling
 - A birthday cake is usually packed in a brown cardboard box
 - To attract customers
 - For easy transportation
 - To preserve flavor
 - To give information
 - A light meal eaten between the main meals of the day is referred to as
 - elevenes
 - high tea
 - brunch
 - snack
 - In table setting, the main reason for covering the table with a cloth is to
 - Make the setting formal
 - Protect the table surface
 - Make the table attractive
 - Act like a silencer
 - An example of a wet medium is
 - Chalk
 - Coloured
 - Crayon
 - Poster colour
 - What are the primary colours of pigment?
 - Red, yellow, green
 - Red, blue, green
 - Yellow, blue, green
 - Red, yellow, blue

13. Growth is symbolically represented with the colour
- Green
 - Red
 - Yellow
 - White
14. Placing value on an item is called
- Costing
 - Labelling
 - Pricing
 - Selling
15. Where the sky appears to meet the land is called the
- Horizon
 - Foreground
 - Background
 - plane
16. The aim of mending articles is to
- add value to the item.
 - improve creative skills.
 - make the item useful.
 - make good use of leisure time.
17. Examples of second-class protein foods are
- melon seeds, cheese and milk.
 - cowpeas, oysters and broad beans.
 - groundnuts, milk and melon seeds.
 - cowpeas, melon seeds and groundnuts.
18. One of the characteristics of plant fibres is that they
- smoulder when burnt
 - have low absorbency.
 - burn readily.
 - are wrinkle resistant.
19. An advantage of a freehand cutting is that
- less fabric is used.
 - it is easy for beginners.
 - it saves time and energy.
 - a lot of pins are used.
20. Regenerated fabrics are obtained from
- man-made fibre.
 - synthetic fibre.
 - natural fibre.
 - animal fibre.
21. Dishes that provide the body with concentrated form of energy are
- vegetable soup and boiled rice.
 - boiled beans and gari.
 - vegetable salad and bread.
 - meatpie and queens cake.
22. Rickets causes weakness in bones and teeth of
- adolescents.
 - elderly.
 - vegetarians.
 - children.
23. A disadvantage of grilling is that
- food should always be basted.
 - it is slow method of cooking.
 - it needs constant attention.
 - most nutrients are lost.
24. An important factor to consider when purchasing fabric for student is the
- money available.
 - weather condition.
 - height of wearer.
 - size of wearer.
25. Faced openings are usually used on the
- front part of boy's shirt.
 - side of girl's dresses.
 - back of students' uniforms.
 - side of skirts for the elderly.
26. Examples of dishes prepared using batter mixtures are
- banana fritters and pancakes.
 - bread and rocks.
 - ring doughnuts and queens' cake.
 - pancake and biscuits.
27. The fat-soluble vitamins in a meal of kontomire stew, boiled brown rice and baked egg custard are
- Vitamin C and D.
 - Vitamin A and B.
 - Vitamin B and D.
 - Vitamin E and K.
28. The best stitch to use in transferring pattern markings onto fabric is
- basting.
 - overcasting.
 - backstitch.
 - tailors tack.

29. The reasons for adding seasoning to food is to

- A. enhance flavour.
- B. improve texture.
- C. enhance colour.
- D. increase quantity.

30. Sifted wood ash is a local abrasive suitable for cleaning

- A. wood and glass.
- B. ceramic and aluminium.
- C. glass and ceramic ware.
- D. aluminium and wood ware.

END OF PAPER